


## GM

Efficient and reliable monoblock units  
with avantgarde management technology

- 
- › Quick straddle wall installation ideal for new applications or through wall installation ideal for renovations
  - › Condensing part body with metallic gray finishing
  - › The white color of the evaporator blends discreetly with the walls of the cold room
  - › Compressor compartment is ready to be insulated with suitable sound-absorbing material to reduce noise levels
  - › Micro-channel condensers are available on the smallest frame (GM1) to reduce the refrigerant charge as much as possible and ensure higher energy efficiency
  - › Units equipped with a new generation control panel with an easy-to-use interface suitable to be connected to monitoring and remote management systems



## Standard configuration

- › Hermetic compressor
- › Power supply 220-230/1N~/50 or 380-400/3N~/50
- › Air + Axial Fan
- › 100mm legs
- › Electronic control panel
- › Expansion through capillary tube
- › Liquid line filter
- › Coldroom light with bulb
- › Door micro switch cable
- › Door heater cable for low temperature units
- › Condensate water evaporation drip tray
- › Drain heater BT
- › Straddle mounting or through wall configuration
- › High and low pressure switches
- › Cables length 5m
- › Hot gas defrost
- › Refrigerant charge



The range has three main construction frames: GM1, GM2 and GM3. Thanks to this, there is a unit suitable for each of the most common applications.

## A versatile range with low running costs

The models of the GM range are monoblock units characterized by compactness, suitable and accessible to anyone looking for a type of wall installation.

Suitable for small rooms, the GM range is composed by 2 lines: the MGM for medium temperatures (max 38 m<sup>3</sup> at Tc= +0°C, Tamb= +32°C) and the BGM for low temperatures (max 39 m<sup>3</sup> at Tc= -20°C, Tamb= +32°C).

This range of monoblocs, characterized by remarkable compactness, allows to optimize the useful space inside the cold room, guaranteeing excellent performance and reliability.

The robustness, simplicity of installation and extreme ease of use represent the strong points of these units range, as well as guaranteeing high efficiency in heterogeneous working conditions.

The reciprocating hermetic compressor and the programmed automatic hot gas defrosting, with cycle frequency, make the GM a stand-alone and reliable machine, without the need for recurring maintenance.

The condensation water elimination system is automatic and does not require external connections allowing a clean and autonomous operation thanks to the

condensate water evaporation tray available in the standard configuration of the unit.

The electrical panel of the GM has an electronic control unit whose operating parameters are already programmed.

The electronic control unit manages the GM and allows the signalling of any anomalies.

## Personalization options and accessories

### Power supply:

- › 220-230/1N~/50 (standard MGM103÷211 and BGM110÷218 units)
- › 380-400/3N~/50 (standard MGM212÷320 and BGM220÷340 units)
- › 220-230/1N~/60
- › 220-230/3~/50
- › 220-230/3~/60
- › 440/3~/60
- › 380-400/3N~/60
- › 110-115/1N~/60
- › 460/3~/60

### Condensation type:

- › Air + Centrifugal fan
- › City water with pressure valve

### Winter Kit, low ambient temperature accessories:

- › Crankcase heater + Condenser fan pressure switch + Double solenoid valve for defrosting
- › Crankcase heater + Pressure controlled condenser fan speed regulator + Double solenoid valve for defrosting

### Soundproofing options:

- › 100mm legs + Panel kit
- › 150mm legs + Simple noise insulation
- › 150mm legs + Simple noise insulation + Panel kit

### Accessories kit:

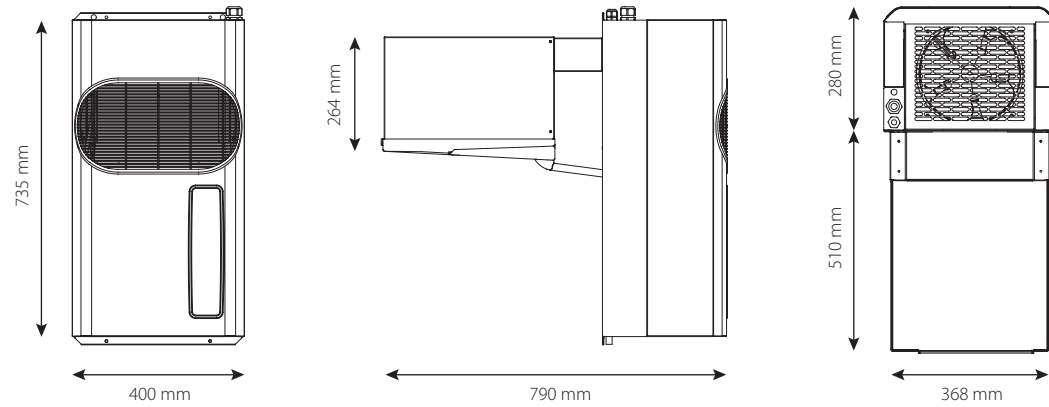
- › GM1 panel kit | 100mm
- › GM2 panel kit | 100mm
- › GM3 panel kit | 100mm

- › GM3 (BGM340) panel kit | 100mm
- › GM1 panel kit | 150mm
- › GM2 panel kit | 150mm
- › GM3 panel kit | 150mm
- › GM3 (BGM340) panel kit | 150mm
- › Audible and visual alarm
- › Remote control panel for 2-3-4 units
- › Remote control panel for 1 unit
- › Prearrangement for supervision system
- › Remote control panel for 2 units with alternating operation

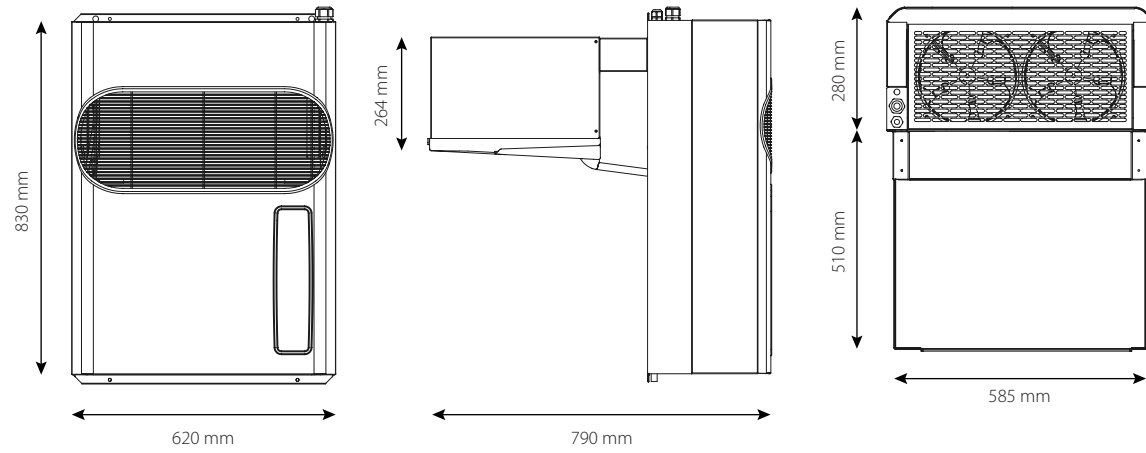
# How and where to install the units

## Dimensions

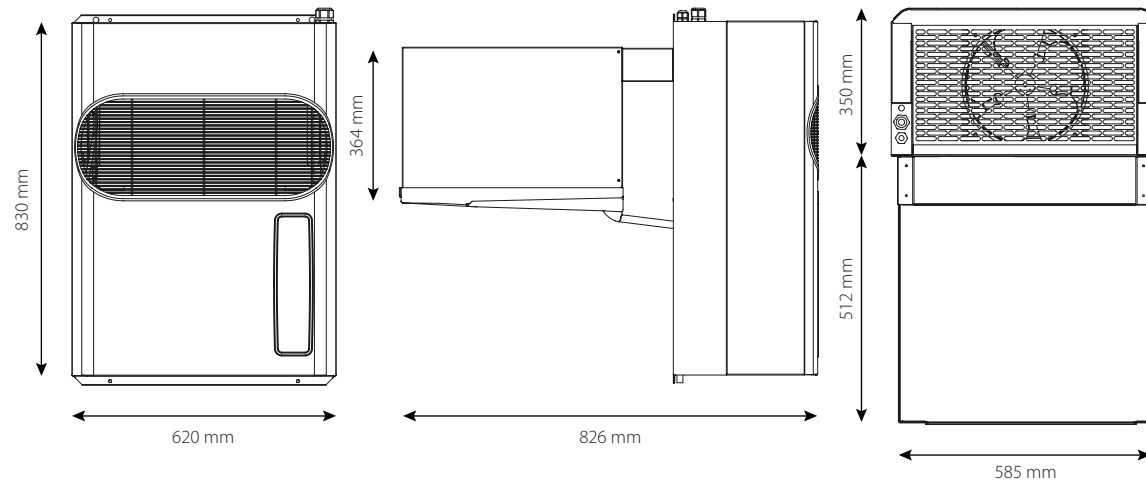
Constructive frame 1



Constructive frame 2



Constructive frame 3



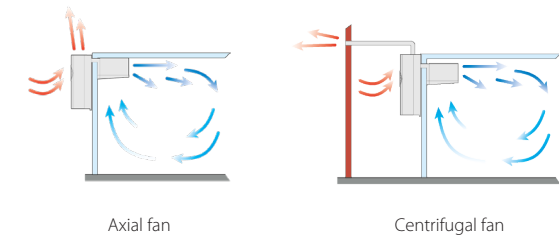
## Air flow

The air flow of the GM units is composed by the flow of the condensing part and the one of the evaporating part.

In the condensing part, the air is sucked from the front grille through 1 or more condenser/axial fans (the quantity changes according to the constructive frame) and is then expelled from the upper part.

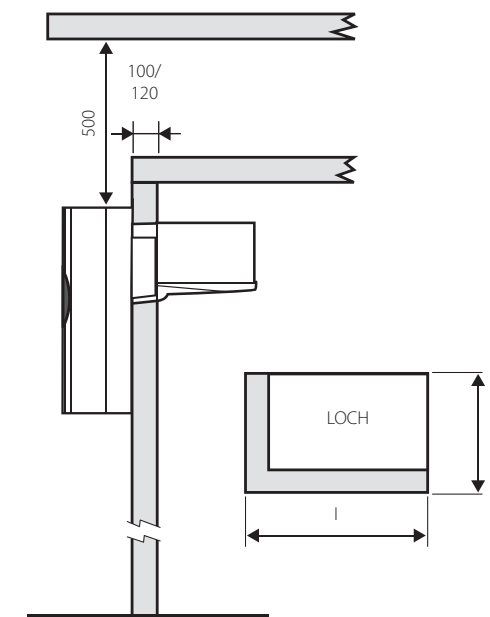
The condensing part equipped with centrifugal fan, thanks to the blades positioned differently compared to axial fan version, can direct the air flow by means of a duct towards a specific direction to avoid excessive heating of the surrounding environment.

Inside the refrigerated room, in the evaporating part, the air is sucked in from the lower part of the evaporator and then expelled from the front.

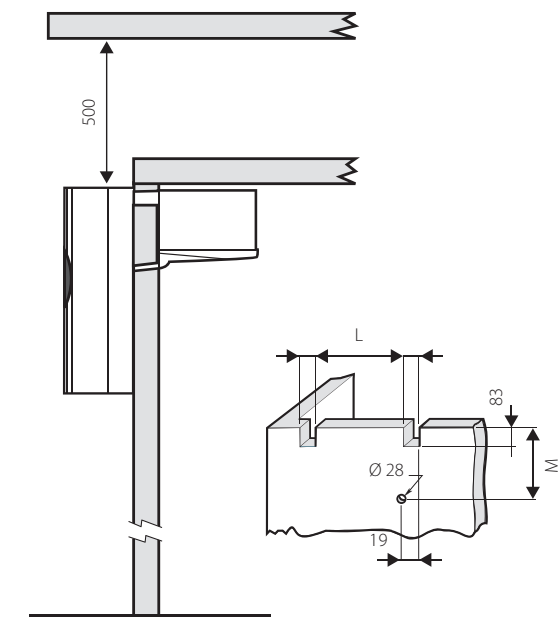


## Installation method

THROUGH-THE-WALL



STRADDLE-TYPE



	FRAME 1	FRAME 2	FRAME 3
H	335 mm	335 mm	440 mm
I	375 mm	590 mm	590 mm
L	288 mm	503 mm	503 mm
M	316 mm	316 mm	425 mm

The body of the condensing part has been designed to reduce as much as possible the occupied space outside the cold room. The units are ideally designed for straddle wall installation, which is simple and minimally invasive.

The version for through wall installation is also available, in which a hole is executed through the cold room wall, recreating, thanks to an insulating panel installed on the machine, the thickness of the insulating panel that has been removed.

By choosing the centrifugal fan option, the height of the unit varies: the frame 1 becomes 853 mm tall and the frame 2 and 3 become 1006 mm tall.



# Units details



# A wide range of applications





# Technical data



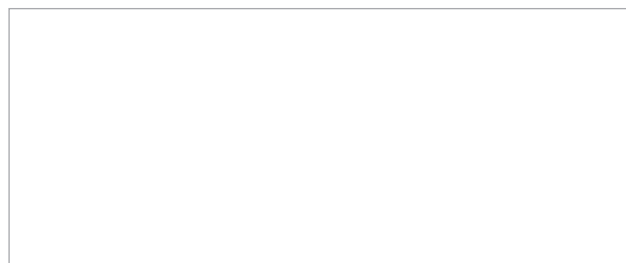
## Medium temperature units

Code	MGM103EA11XA	MGM105EA11XA	MGM106EA11XA	MGM107EA11XA	MGM110EA11XA	MGM111EA11XA	MGM1212EB11XA	MGM1315EB11XA	MGM1320EB11XA
Refrigerant	R134a	R134a	R134a	R134a	R134a	R134a	R134a	R134a	R134a
Power supply [V/Ph~/Hz]	220- 230/1N~/50	220- 230/1N~/50	220- 230/1N~/50	220- 230/1N~/50	220- 230/1N~/50	220- 230/1N~/50	380- 400/3N~/50	380- 400/3N~/50	380- 400/3N~/50
HP compressor	1/2	5/8	3/4	1	1,2	1,2	2,3	3	3,5
Defrost	Hot gas	Hot gas	Hot gas	Hot gas	Hot gas	Hot gas	Hot gas	Hot gas	Hot gas
PED category	0	0	0	0	0	0	0	0	0
Working temperature [°C]	+10 ÷ -5	+10 ÷ -5	+10 ÷ -5	+10 ÷ -5	+10 ÷ -5	+10 ÷ -5	+10 ÷ -5	+10 ÷ -5	+10 ÷ -5
Cooling capacity [Watt] [TC=0°C   TA=30°C]	855	978	1.120	1.315	1.351	1.806	2.034	3.079	3.351

## Low temperature units

Code	BGM110DA11XA	BGM112DA11XA	BGM117DA11XA	BGM118DA11XA	BGM220DB11XA	BGM320DB11XA	BGM330DB11XA	BGM340DB11XA
Refrigerant	R452A	R452A	R452A	R452A	R452A	R452A	R452A	R452A
Power supply [V/Ph~/Hz]	220- 230/1N~/50	220- 230/1N~/50	220- 230/1N~/50	220- 230/1N~/50	380- 400/3N~/50	380- 400/3N~/50	380- 400/3N~/50	380- 400/3N~/50
HP compressor	1	1,2	1,7	1,7	2	2	3	4
Defrost	Hot gas	Hot gas	Hot gas	Hot gas	Hot gas	Hot gas	Hot gas	Hot gas
PED category	0	0	0	0	0	0	0	2
Working temperature [°C]	-15 ÷ -25	-15 ÷ -25	-15 ÷ -25	-15 ÷ -25	-15 ÷ -25	-15 ÷ -25	-15 ÷ -25	-15 ÷ -25
Cooling capacity [Watt] [TC=-20°C   TA=30°C]	679	889	1.155	1.429	1.688	2.491	2.701	3.160

Responsible Editor: Zanotti S.p.A. Via M.L. King, 30 · 46020 Pegognaga (MN) · Italy · www.zanotti.com · P.IVA IT01856570203 · REA 220625



ECPEN21-803D

09/2023



The present publication is drawn up by way of information only and does not constitute an offer binding upon Daikin Europe N.V. Daikin Europe N.V. has compiled the content of this publication to the best of its knowledge. No express or implied warranty is given for the completeness, accuracy, reliability or fitness for particular purpose of its content and the products and services presented therein. Specifications are subject to change without prior notice. Daikin Europe N.V. explicitly rejects any liability for any direct or indirect damage, in the broadest sense, arising from or related to the use and/or interpretation of this publication. All content is copyrighted by Daikin Europe N.V.